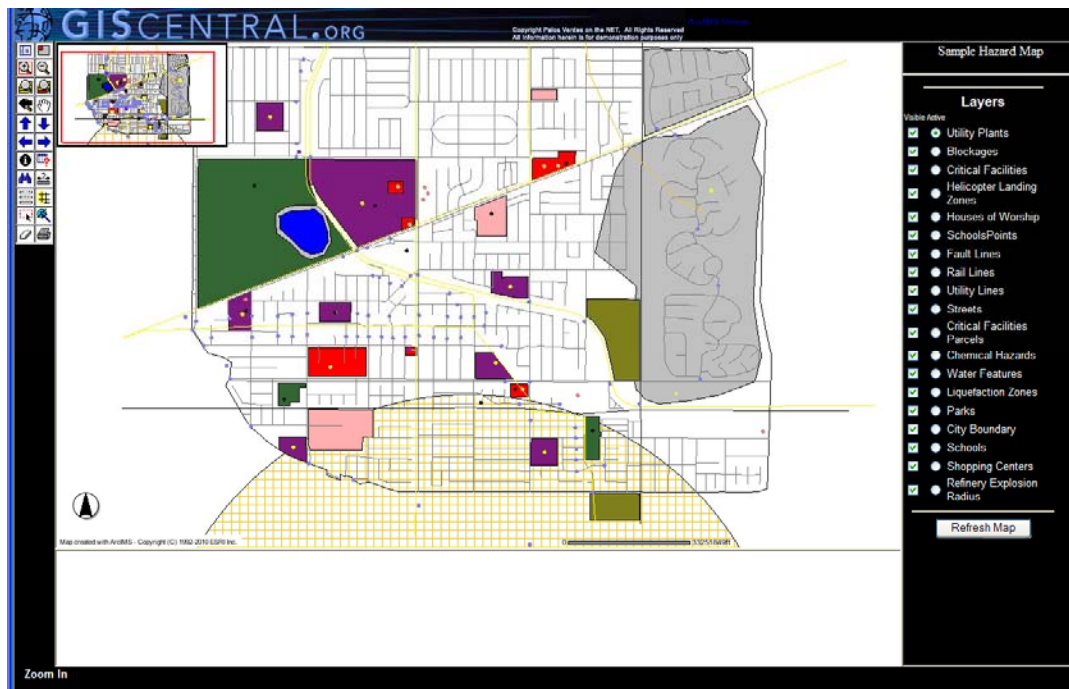


# Creating Emergency Preparedness Maps using GIS

## Purpose

PVNet worked with Mike Martinet, Executive Director at Area G Disaster Management, to provide cities with an example to create their own emergency preparedness maps using GIS. The example created using GIS can be accessed and used as a template for further emergency preparedness plan development. The example acts as a stepping stone in the creation of effective maps and useful data for a big emergency in a city. Cities around the world can use this example to create their own emergency preparedness maps that can potentially help save lives.



## Method

A sample area of Los Angeles County was taken from public files, consisting of parts of Torrance, Gardena, and an unincorporated area. This data was used to create the foundation of the example fictional city. Features such as schools, chemical refineries, evacuation centers, and utility lines were then added to show the spatial relationships between each feature. After review, the map was uploaded to an Internet Mapping Server (ArcIMS) for public display. ArcIMS allows users to control what data is shown, zoom in, and pan around the map. If a user wants more information about a feature, they can select or search for the features and see relevant information. Users also have the ability to create a buffer around important land marks within the city, allowing them to see what features might be impacted during an emergency.

## Result

The example map can be adapted and used as a template for further emergency preparedness map development in any city around the world. ArcIMS allows for resourceful display of spatial data and it is still on public display at <http://public.giscentral.org/website/SampleHazardMap/viewer.htm>